

# What is CDS?

*CDS is a lifeline for families.  
CDS is a resource for the community.  
CDS is a place to get help.*

While CDS's many individual programs serve a wide variety of community needs, they all fall under the umbrella of our mission statement:

### Strengthening Communities by Building Strong Families.



Be it troubled youth, adults struggling with substance abuse or children at high risk for dangerous behaviors, CDS has programs that can help.

CDS has been serving the communities of North Central Florida for more than 40 years. Its services now cover an eleven-county area:

Alachua	Dixie	Lafayette	Suwannee
Bradford	Gilchrist	Levy	Union
Columbia	Hamilton	Putnam	

CDS Family & Behavioral Health Services, Inc. is a private 501(c)(3) non-profit social services agency. At CDS, we constantly monitor our programs and results in order to better serve participants. We welcome your feedback!

[www.cdsfl.org](http://www.cdsfl.org)

# Support Our Work!

CDS needs your help in order to continue providing valuable services to the community. Contributions are tax deductible and vital to our ongoing success. Both monetary and in-kind donations are very much appreciated! We also need volunteers to keep our many programs operating. For more information, please visit CDS's website or contact the Resource Development Coordinator at: (352) 244-0628 x 3865, or [giving@cdsfl.org](mailto:giving@cdsfl.org).

# Contact Information

## CDS Administration

Gainesville .....(352) 244-0628

## Youth Shelters

24 Hour, Toll Free .....(800) 854-5377  
 Interface Central, Gainesville.....(352) 244-0618  
 Interface East, Palatka .....(386) 385-0405  
 Interface Northwest, Lake City.....(386) 487-0190



**Safe Place** .....(352) 244-0618

## Counseling Offices

Gainesville .....(352) 244-0628 x 3813  
 Palatka .....(386) 385-0405  
 Lake City .....(386) 487-0190

**Prevention** .....(352) 244-0628



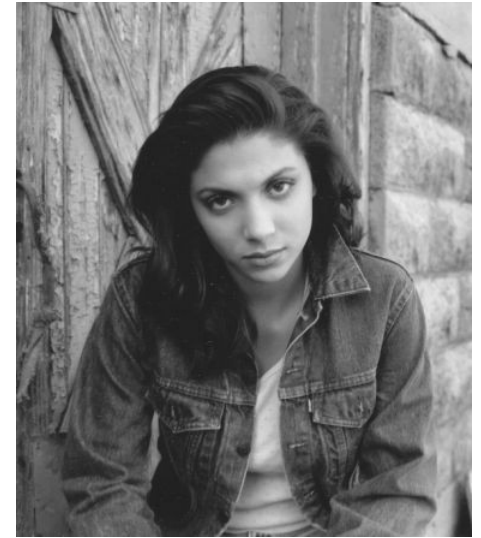
**Youth Talk** .....(352) 244-0666

“A COPY OF THE OFFICIAL REGISTRATION AND FINANCIAL INFORMATION MAY BE OBTAINED FROM THE DIVISION OF CONSUMER SERVICES BY CALLING TOLL-FREE (800-435-7352) WITHIN THE STATE. REGISTRATION DOES NOT IMPLY ENDORSEMENT, APPROVAL, OR RECOMMENDATION BY THE STATE.”



Major support from: Florida Department of Juvenile Justice; Florida Network of Youth & Family Services; Florida Department of Children & Families; Partnership for Strong Families; U.S. Department of Health & Human Services; United Way of North Central Florida; United Way of Suwannee Valley; Individual Donations

# CDS Family & Behavioral Health Services, Inc.



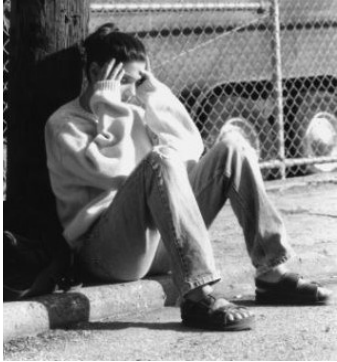
**Turn Your Worksite into a Safe Place Site**

3615 SW 13th Street, Suite 4  
 Gainesville, FL 32608  
 (352) 244-0628 x3865  
[www.cdsfl.org](http://www.cdsfl.org)

Our facilities are accessible to persons with disabilities.



# What is Safe Place?



Project Safe Place is a community program that sets up public locations as a network of places where youth can get immediate help in times of crisis.

## Why do we need Safe Place?

Project Safe Place began in Louisville, KY in 1983 and now involves more than 700 communities across the United States. There are many reasons why a child might need a Safe Place. Maybe they:

- ♦ Are afraid to go home;
- ♦ Have run away;
- ♦ Are being followed or threatened;
- ♦ Have been assaulted, raped, or abused;
- ♦ Have been locked or kicked out of the house;
- ♦ Are lost, scared, bullied, or simply need to talk?



Whatever the reason, the people at Project Safe Place are ready to help.

## How are Safe Place and CDS related?



In 1987, CDS Family & Behavioral Health Services became the Safe Place coordinator for Alachua County. CDS runs Project Safe Place through our Interface Youth Program— three temporary residential shelters for kids in crisis. When a child walks into a Safe Place site asking for assistance, the site contacts our Interface Shelter, which immediately arranges transportation to bring the child to Interface. Once at the shelter, a counselor will talk to the young person and help him or her figure out options and next steps.

## How do I become a Safe Place site?



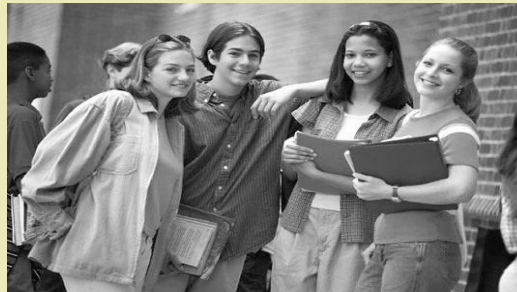
To be considered for approval to become a Safe Place site, call (352) 244-0628, extension 3865.

Once we have determined the appropriateness of your business and location for the Safe Place Program we will send the necessary paperwork. You will

receive a packet of information about the Safe Place program, step-by-step instructions on what to do if a youth comes in seeking a Safe Place, and your responsibilities as a Safe Place location. You will also receive a Safe Place Location Agreement. As a Safe Place site you will be listed in all Safe Place publications, at the National Runaway Switchboard, and on CDS's website at

[www.cdsfl.org](http://www.cdsfl.org)

After returning all paperwork, you will be given a diamond-shaped, yellow sign identifying you as a Safe Place to display prominently outside your business or agency. You will also receive a decal with a phone number to call if a young person needs help after your normal business hours. A qualified Safe Place instructor from CDS will provide a training session for you and your employees.



*Safe Place: Where kids can go to get help fast*

## Where are Safe Places located?

43rd St Deli (NW 25th Place)  
 Agency Bail Bonds  
 Air-Way Cleaners  
 Alachua County Department of Community Support Services  
 Alachua County Regional Detention Center  
 Alachua County Libraries (all)  
 Alachua County Public Schools  
 Arabesque Dancewear  
 Archer City Hall  
 Archer Community Access Center  
 Archer Fire Department  
 Boys & Girls Club of Alachua Co. (2700 NW 51st Street location)  
 Catholic Charities  
 CDS—Interface Shelters & Office  
 Child Advocacy Center  
 Early Learning Coalition  
 Earth Origins (NW 13 Street)  
 Gainesville Recreation Centers  
 Fades & Fros  
 Family Visitation Center (CHS)  
 Fearnside Family Services  
 Gainesville Dojo  
 Gainesville Fire Department  
 Gainesville Job Corps  
 Gainesville Police Department  
 GCM Thrift Shop  
 Girls Place, Inc.

J. Wayne Reitz Union Game Room  
 Junior League Thrift Shop  
 McDonald's (some locations)  
 Meridian Behavioral Health  
 North Central Florida YMCA  
 RTS Bus System (all buses)  
 Skate Station  
 Studio Percussion  
 Town Tire  
 United Way of North Central Florida  
 Winn Dixie (some)

To find the nearest Safe Place site anywhere in USA, TXT 4 Help:

## What is the cost of becoming a Safe Place site?

There is a one-time fee of \$50 to cover the cost of signage, materials, processing, and training. There may also be a charge of \$15 if an additional (or replacement)

- Youth Shelters (24 hrs) ..... (800) 854-5377
- Youth Talk (24 hrs)..... (352) 244-0666
- Alachua County Crisis Center..... (352) 264-6789
- National Runaway Switchboard ... (800) RUNAWAY  
1-800-786-2929
- National Suicide Hotline (24 hrs)..... (800) 273-8255